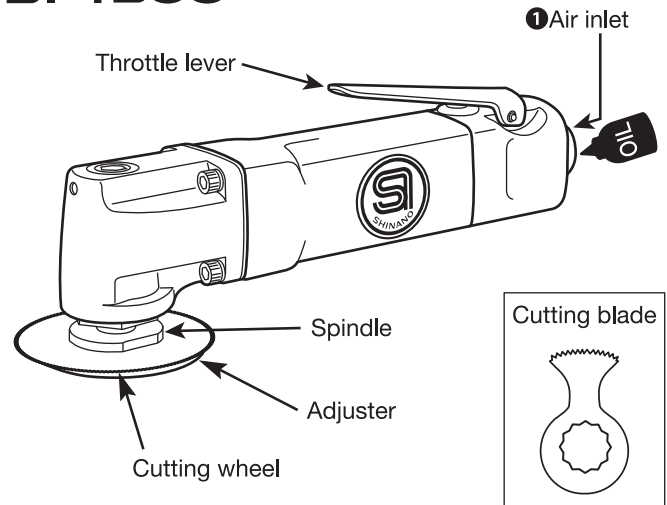


INSTRUCTION MANUAL FOR OSCILLATION CUTTER

Operation Procedures

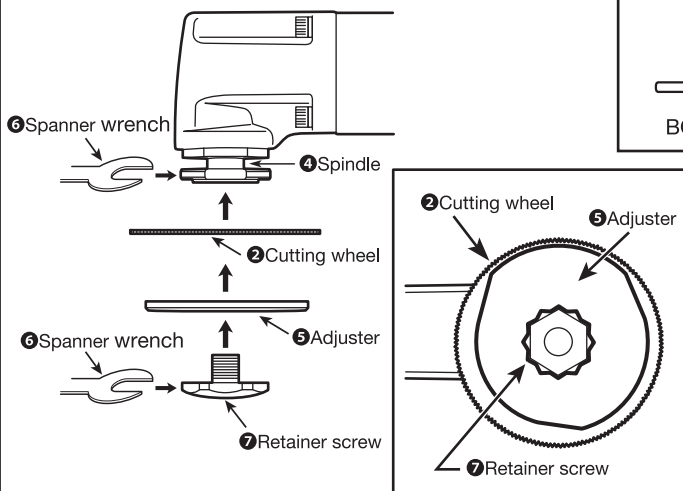
1. Connect the coupler to the air inlet ① on the rear side of the tool.
2. Pour approx. 0.5cc (2 to 3 drops) of the oil through the coupler. Connect it to the air hose, and run for 3 to 5 seconds to circulate the oil.
3. Before an air hose is connected, install the cutting wheel ② or the cutting blade ③.
 - (1) Remove the retainer screw.
 - (2) Adjust the 12-angle hole of blade to the hexagon of the spindle ④, and politely install it according to an operating angle.
 - (3) Next, install the adjuster ⑤. (Only when install cutting wheel.)
 - (4) Fix the spindle with the spanner wrench ⑥, and firmly tighten the retainer screw ⑦ with the spanner wrench ⑥ so as not to loosen.
4. Press the throttle lever to start operation, and release to stop it.

SI-4300

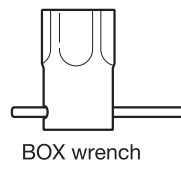


- Accessories :
- Cutting blade (1)
 - Cutting wheel (1)
 - Adjuster (1)
 - Spanner wrench (2)
 - Safety instructions (1)

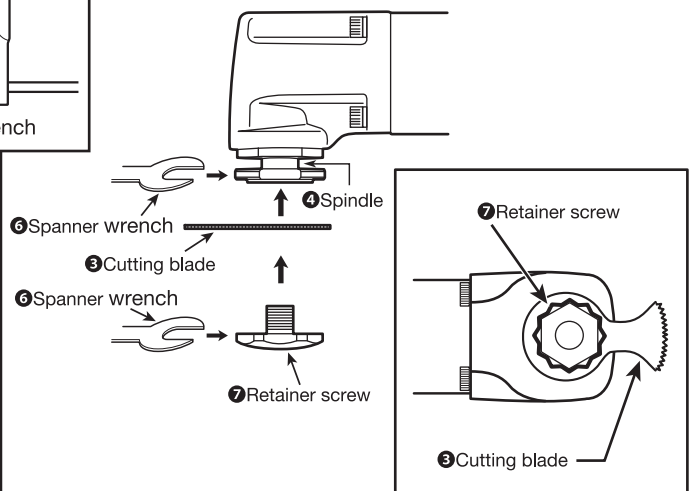
In the Case of Cutting Wheel



Option

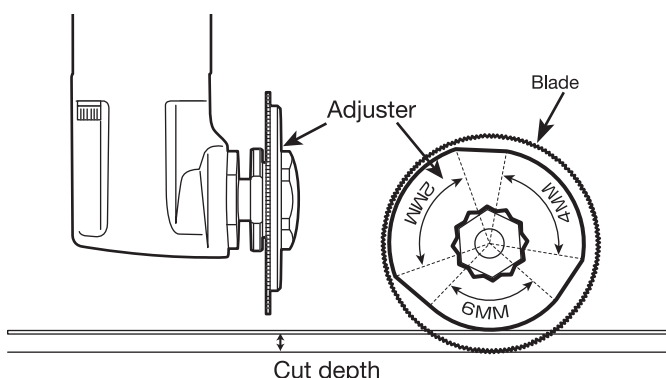


In the Case of Cutting Blade



Caution When the cutting wheel is used, it could be damaged or broken. Be sure to install the adjuster.

Adjustment of Cutting Blade Cut Depth



- ① Adjust the cut depth according to a cut size. (2MM, 4MM, 6MM Cut)

Cut depth can be adjusted with the adjuster.

- ② How to Cut

- Retain the tool positioning at the about 45 degrees gradient to the cut face.
- First, start the tool operation. Then, slowly give pressure without moving the blade so that a cut groove can engraved on the cut object.
- If a cut groove appears, slowly draw and cut it off.

- ③ If the blade is worn, change the blade fixed position.

- An angle to install cutting wheel can be changed every 30 degree, and used to all over the periphery.

SI-4300

Model Number	Disc Size mm	Oscillating Angle	Free Speed opm*	Weight kg/(lb)	Noise Level dBA/(power)	Vibration a/k m/s ²	Avg. Air Consumption CFM
SI-4300	φ63	2.8°	20,000	0.89	88/(99)	4.8 / 0,9	3.2

★o.p.m. (Oscillation Per Minutes).

Noise levels according to ISO 15744

Vibration level according to ISO 28927

WARNING

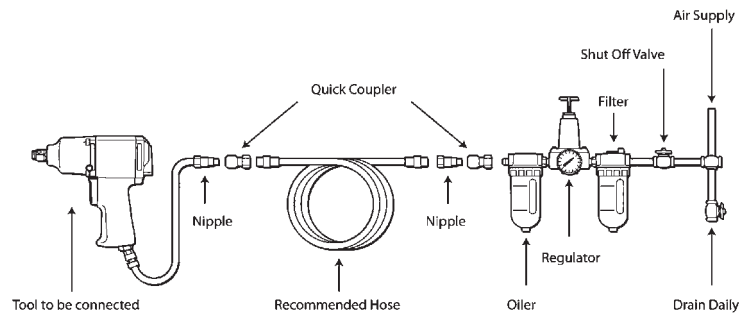
- For replacement of the blade, be sure to remove the air hose.
- For operations, be sure to put on safety goggles.
- During operations, absolutely don't touch the blade.

CAUTION

- Operate the tool within the air pressure of 0.63MPa (6.5kg/cm²). If operated in high pressure, the maximum allowance speed will be exceeded, which may result in damage of components.
- Neither drop nor hit the tool.
- Don't install the product other than our recommendable blade.
- Don't use the tool for curve cut. A forced load could give damage to the tool.
- Install the blade so as not to loosen.

AIR SUPPLY

Pressure at the working	0.63MPa (90PSI 6.3bar)
Max Hose Length	10m (30ft)
Lubrication	Daily Lubricating oil



 **SHINANO INC.**

<http://www.shinanoinc.com>

MADE IN JAPAN