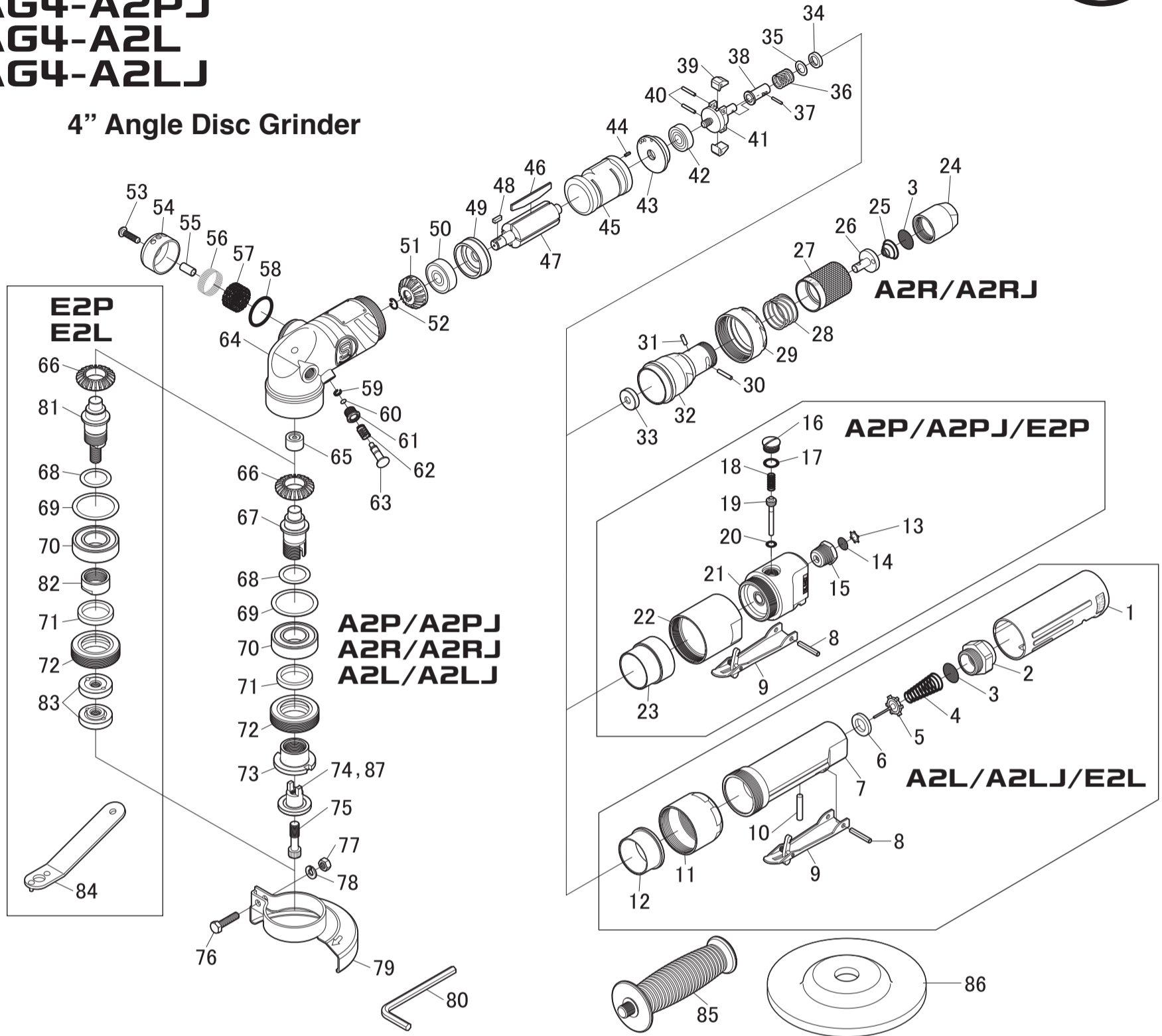


SI-AG4-A2R
SI-AG4-A2RJ
SI-AG4-A2P
SI-AG4-A2PJ
SI-AG4-A2L
SI-AG4-A2LJ

SI-AG4-E2P
SI-AG4-E2L



4" Angle Disc Grinder



| Ref. No. | Parts No. | Description | Q'ty | Ref. No. | Parts No. | Description | Q'ty | Ref. No. | Parts No. | Description | Q'ty |
|-----------------------------------|-----------|--|------|--|-----------|---------------------------|------|---------------------|-------------|------------------------------|------|
| AG4-A2L, AG4-A2LJ, AG4-E2L | | | | AG4-A2P, AG4-A2PJ, AG4-A2R, AG4-A2RJ, AG4-A2L, AG4-A2LJ | | | | COMMON PARTS | | | |
| 1 | 242SIL-4 | Grip Cover | 1 | 66 | 244-8 | Bevel Gear | 1 | 34 | 242-31 | Governor Valve Spring Holder | 1 |
| 2 | 242-6 | Bushing | 1 | 67 | 246-3 | Spindle(M8-1.25) | 1 | 35A | 242-32A | Shim(0.2mm) | ★ |
| 3 | 2011AC-9 | Screen | 1 | 68A | 242-19A | Shim(0.2mm) | ★ | 35B | 242-32B | Shim(0.3mm) | |
| 4 | 242SIL-10 | Valve Spring | 1 | 68B | 242-19B | Shim(0.3mm) | | 35C | 242-32C | Shim(0.5mm) | |
| 5 | 966-11 | Valve | 1 | 68C | 242-19C | Shim(0.5mm) | | 36 | 630-19 | Governor Spring | 1 |
| 6 | 1071C-20 | Valve Seat | 1 | 69 | 244-4 | Washer | 1 | 37 | 242-33 | Needle Pin | 1 |
| 7 | 244-13 | Governor Case incl. Bush (242SIL-11) | 1 | 70 | 6004ZZNSK | Ball Bearing | 1 | 38 | 242-29 | Governor Valve | 1 |
| 8 | 40-25 | Roll Pin(4ø-25mm) | 1 | 71 | 242-18 | Felt Ring | 1 | 39 | 242-27 | Governor Weight | 2 |
| 9 | 242SIL-7 | Throttle Lever | 1 | 72 | 244-3 | Spindle Nut | 1 | 40 | 2500-15-8 | Needle Roller | 2 |
| 10 | 242SIL-13 | Valve Pin | 1 | 73 | 244-1 | Disc Receiver | 1 | 41 | 630-17 | Governor Houshing | 1 |
| 11 | 244-15 | Lock Ring | 1 | 75 | 244-5 | Cap Screw | 1 | 42 | 609ZZNSK | Ball Bearing | 1 |
| 12 | 244-14 | Collar | 1 | 80 | WRA-6 | 6mm Allen Wrench | 1 | 43 | 630-16A | Rear Plate | 1 |
| AG4-A2P, AG4-A2PJ, AG4-E2P | | | | AG4-E2P, AG4-E2L | | | | | | | |
| 8 | 40-25 | Roll Pin(4ø-25mm) | 1 | 66 | 244-8 | Bevel Gear | 1 | 44 | 20-6 | Roll Pin(2ø-6mm) | 1 |
| 9 | 242SIL-7 | Throttle Lever | 1 | 68A | 242-19A | Shim(0.2mm) | ★ | 45 | 630-15 | Cylinder | 1 |
| 13 | CRTW-12 | Retainer | 1 | 68B | 242-19B | Shim(0.3mm) | | 46 | 630-13 | Rotor Blade | 4 |
| 14 | 680-28A | Screen | 1 | 68C | 242-19C | Shim(0.5mm) | | 47 | 630-14 | Rotor | 1 |
| 15 | 670-22 | Inlet Bushing | 1 | 69 | 244-4 | Washer | 1 | 48 | 630-11 | Key | 1 |
| 16 | 230-68 | Valve Screw | 1 | 70 | 6004ZZNSK | Ball Bearing | 1 | 49 | 630-12A | Front Plate | 1 |
| 17 | P-10 | O-Ring | 1 | 71 | 242-18 | Felt Ring | 1 | 50 | 6200ZZNSK | Ball Bearing | 1 |
| 18 | 450-24 | Valve Spring | 1 | 72 | 244-3 | Spindle Nut | 1 | 51 | 244-9 | Pinion Gear | 1 |
| 19 | 630SIL-6 | Valve Pin | 1 | 81 | 244PL-4 | Spindle(3/8-24UNF) | 1 | 52 | 244-12 | Retainer Ring | 1 |
| 20 | P-6 | O-Ring | 1 | 82 | 244PL-5 | Spacer | 1 | 53 | AZM50---200 | Cap Screw | 1 |
| 21 | 630SIL-4 | Valve Housing incl. Governor Collar (630SIL-5) & Bush (280-67) | 1 | 83 | 240F-2 | Disc Receiver | 2 | 54 | 246-4 | Deflector | 1 |
| 22 | 630SIL-2 | Lock Ring | 1 | 84 | 380-50 | Pin Wrench (3øx20mm) | 1 | 55 | 242SIL-12 | Collar | 1 |
| 23 | 630SIL-3 | Collar | 1 | 86 | 240-71E | 4" Disc (Disc Hole ø16mm) | 1 | 56 | 246-15 | Exhaust Screen | 1 |
| AG4-A2R, AG4-A2RJ | | | | AG4-A2PJ, AG4-A2RJ, AG4-A2LJ | | | | | | | |
| 3 | 2011AC-9 | Screen | 1 | 74 | 244-2 | Disc Nut 15mm | 1 | 57 | 246-11 | Muffler | 1 |
| 24 | 630-29 | Bushing | 1 | AG4-A2P, AG4-A2R, AG4-A2L | | | | 58 | S-26 | O-Ring | 1 |
| 25 | 630-28 | Valve Spring | 1 | 86 | 240-71E | 4" Disc (Disc Hole ø16mm) | 1 | 59 | 2011AC-94A | Retaining Ring | 1 |
| 26 | 630-27 | Valve | 1 | 87 | 244-17 | Disc Nut 16mm | 1 | 60 | 2011AC-106 | O-Ring | 1 |
| 27 | 630-26 | Valve Ring | 1 | | | | | 61 | 2011AC-92A | Lock Pin Nut | 1 |
| 28 | 630-25 | Valve Spring | 1 | | | | | 62 | 2011AC-95A | Spring | 1 |
| 29 | 630-24 | Motor Lock Nut | 1 | | | | | 63 | 244-16 | Lock Pin | 1 |
| 30 | 3000-16-8 | Needle Roller | 1 | | | | | 64 | 244-10 | Motor Housing | 1 |
| 31 | 502-32 | Pin | 1 | | | | | 65 | BK1210 | Needle Bearing | 1 |
| 32 | 630-23 | Governor Case | 1 | | | | | 76 | W-M60--250 | Bolt | 1 |
| 33 | 630-22 | Governor Bush | 1 | | | | | 77 | N2-M60 | Nut | 1 |
| | | | | | | | | 78 | HSW-60 | Washer | 1 |
| | | | | | | | | 79 | 244-6 | Disc Cover | 1 |
| | | | | | | | | 85 | 242SIL-20 | Anti Vibration Handle | 1 |