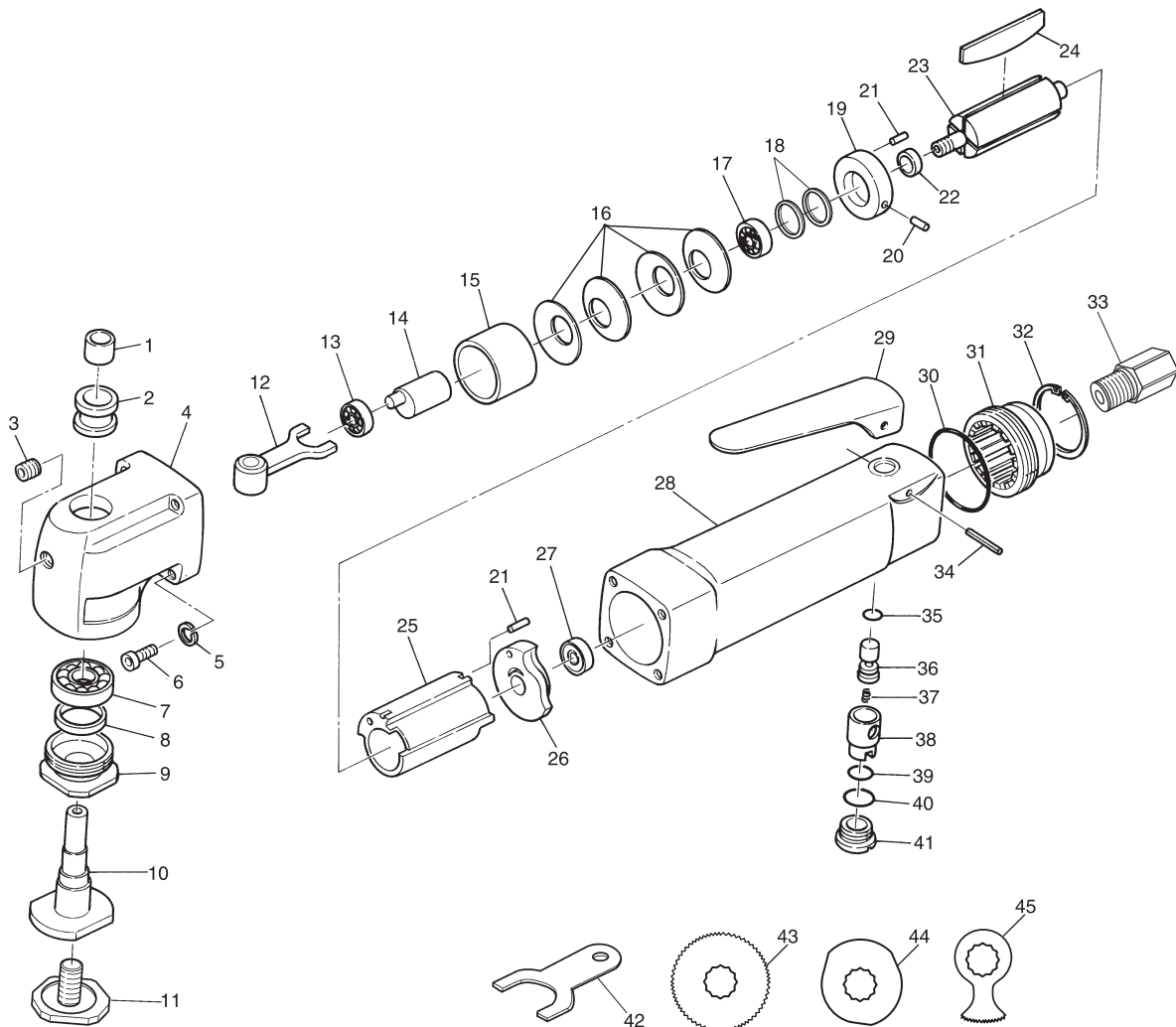


SI-4300 Oscillation Cutter



Ref. No.	Parts No.	Description	Q'ty	Ref. No.	Parts No.	Description	Q'ty
1	BK0709	Needle Bearing	1	23	350-15	Rotor	1
2	580-35	Bearing Case	1	24	350-16	Rotor Blade	4
3	R-832-1/4	Grease Plug	1	25	680-1	Cylinder	1
4	508-37	Angle Head	1	26	620-9	Rear Plate	1
5	HSW-40	Washer	4	27	626ZZ	Ball Bearing	1
6	Z832..190	Cap Screw	4	28	502CNB-1	Motor Housing incl. Bush & Cover(350-4, 660R-37)	1
7	EE3	Ball Bearing	1	29	350-2	Throttle Lever	1
8	508-7	Oil Seal	1	30	680-28	O-Ring	1
9	508-34	Spindle Nut	1	31	620-18	Deflector	1
10	508-36	Spindle	1	32	620-30	Retaining Ring	1
11	508-33	Retainer Screw	1	33	180-1SC	Inlet Bushing incl. Screen (680-28A) & Retainer (CRTW-12)	1
12	508-32	Drive Fork	1	34	30-24	Roll Pin (3-24mm)	1
13	607ZZ	Ball Bearing	1	35	P-5	O-Ring	1
14	508-31	Crank Shaft	1	36	350-5	Valve Stem	1
15	508-41	Spacer	1	37	350-7	Valve Spring	1
16	508-40	Spring Washer	4	38	350-8A	Air Regulator	1
17	6000ZZ	Ball Bearing	1	39	P-8	O-Ring	1
18	350-20	Shim (0.03mm)	1~2	40	P-11	O-Ring	1
	350-29	Shim (0.05mm)	1~2	41	350-10	Valve Screw	1
19	620-10	Front Plate	1	42	508-43	Spanner Wrench	2
20	25-3.5	Roll Pin (2.5-3.5mm)	1	43	508-45A	Cutting Wheel	1
21	25-5	Roll Pin (2.5-5mm)	2	44	508-44	Adjuster	1
22	350-18	Collar	1	45	508-45B	Cutting Blade	1

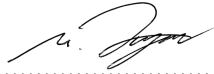
ENGLISHDECLARATION OF CONFORMITY

SHINANO INC.,
1672, Ohnohara, Kamekubo, Fujimino, Saitama 356-0051,
JAPAN, declares as manufacturer that :

SI-4300 Oscillation Cutter
with serial no. : YEAR/ 0001-up

conformes with EC Machinery Directive 2006/42/EC.

01. 02. 2012


.....
Masayuki Aoyama, Export Manager

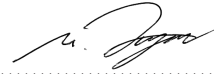
DANISHERKLÆRING OM OVERENSTEMMELSE

SHINANO INC.,
1672, Ohnohara, Kamekubo, Fujimino, Saitama 356-0051,
JAPAN, erklærer som producent at :

SI-4300 Oscillerende Skæremaskine
med serie nr. : YEAR/ 0001-up

er i overensstemmelse med bestemmelserne i Direktiv
2006/42/EC.

01. 02. 2012


.....
Masayuki Aoyama, Export Manager

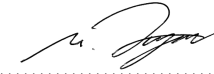
GREEKΔΗΛΩΣΗ-ΒΕΒΑΙΩΣΗ

SHINANO INC.,
1672, Ohnohara, Kamekubo, Fujimino, Saitama 356-0051,
JAPAN, δηλώνει ως κατασκευάστρια σι. :

SI-4300 Εκκεντροσ Κοφτήσ
μέ Serial no. : YEAR/ 0001-up

κατασκευάστηκε σύμφωνα με την εντολή τής
Ευρ. Ενωσής 2006/42/EC.

01. 02. 2012


.....
Masayuki Aoyama, Export Manager

ITALIANDICHIARAZIONE DI CONFORMITÀ

SHINANO INC.,
1672, Ohnohara, Kamekubo, Fujimino, Saitama 356-0051,
JAPAN, in qualità di produttore dichiara che :

SI-4300 Cesويا ad oscillazione
matricola nr. : YEAR/ 0001-up

é conforme alla Direttiva Macchine della Comunità Europea
2006/42/EC.

01. 02. 2012


.....
Masayuki Aoyama, Export Manager

DUTCHVERKLARING VAN CONFORMITEIT

SHINANO INC.,
1672, Ohnohara, Kamekubo, Fujimino, Saitama 356-0051,
JAPAN, verklaart als fabrikant dat :

SI-4300 Ruitensnijder
met serienummer : YEAR/ 0001-up

conforme is met de EC Machinery Richtlijn 2006/42/EC.

01. 02. 2012


.....
Masayuki Aoyama, Export Manager


FINNISHVAAITIMUSTENMUKAISUUSVAKUUTUS

SHINANO INC.,
1672, Ohnohara, Kamekubo, Fujimino, Saitama 356-0051,
JAPAN, vakuuttaa valmistajana että :

SI-4300 Värähtelevä leikkuri
Sarja no. : YEAR/ 0001-up

on yhdenmukainen EC Konedirektiivin 2006/42/EC.

01. 02. 2012


.....
Masayuki Aoyama, Export Manager

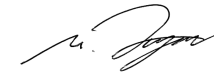
NORWEGIANBEKREFTELSE OM OVERENSTEMMELSE

SHINANO INC.,
1672, Ohnohara, Kamekubo, Fujimino, Saitama 356-0051,
JAPAN, bekrefter som produsent at :

SI-4300 Oscillerende Skjæremaskin
med serie nr. : YEAR/ 0001-up

overensstemmer med Maskinforskrifter 2006/42/EC.

01. 02. 2012


.....
Masayuki Aoyama, Export Manager

PORTUGUESEDECLARAÇÃO DE CONFORMIDADE

SHINANO INC.,
1672, Ohnohara, Kamekubo, Fujimino, Saitama 356-0051,
JAPÃO, declara como fabricante que :

SI-4300 Faca de corte
com a série nº : YEAR/ 0001-up

está de acordo com as Directivas para Máquinas da
Comunidade Económica 2006/42/EC.

01. 02. 2012


.....
Masayuki Aoyama, Export Manager


FRENCHATTESTATION DE CONFORMITE

Le constructeur soussigné : SHINANO INC., 1672, Ohnohara,
Kamekubo, Fujimino, Saitama 356-0051, JAPON
certifie que le matériel neuf désigné ci-après :

SI-4300 Couteau oscillant
Numéro Sériel : YEAR/ 0001-up

est conforme : – aux prescriptions du décret des machines
n° 2006/42/EC.

01. 02. 2012


.....
Masayuki Aoyama, Export Manager

GERMANÜBEREINSTIMMUNGSERKLÄRUNG

SHINANO INC.,
1672, Ohnohara, Kamekubo, Fujimino, Saitama 356-0051,
JAPAN, versichert in der Eigenschaft als Hersteller, dass

SI-4300 Schwing-schneider
Seriennummer : YEAR/ 0001-up

mit der Maschinenvorschrift 2006/42/EC.

01. 02. 2012


.....
Masayuki Aoyama, Export Manager

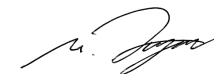
SPANISHDECLARACION DE CONFORMIDAD

SHINANO INC.,
1672, Ohnohara, Kamekubo, Fujimino, Saitama 356-0051,
JAPAN, Declara como fabricante que :

SI-4300 Cortadora Oscilante
con nº de serie : YEAR/ 0001-up

cumple con la Directiva de Maquinaria de la UNION EUROPEA
2006/42/EC.

01. 02. 2012


.....
Masayuki Aoyama, Export Manager

SWEDISHFÖRSÄKRAN OM ÖVERENSSTÄMMELSE

SHINANO INC.,
1672, Ohnohara, Kamekubo, Fujimino, Saitama 356-0051,
JAPAN, försäkrar som tillverklara att :

SI-4300 Oscillerande skärmaskin
med serie nr. : YEAR/ 0001-up

överensstämmer med Maskindirektivet 2006/42/EC.

01. 02. 2012


.....
Masayuki Aoyama, Export Manager