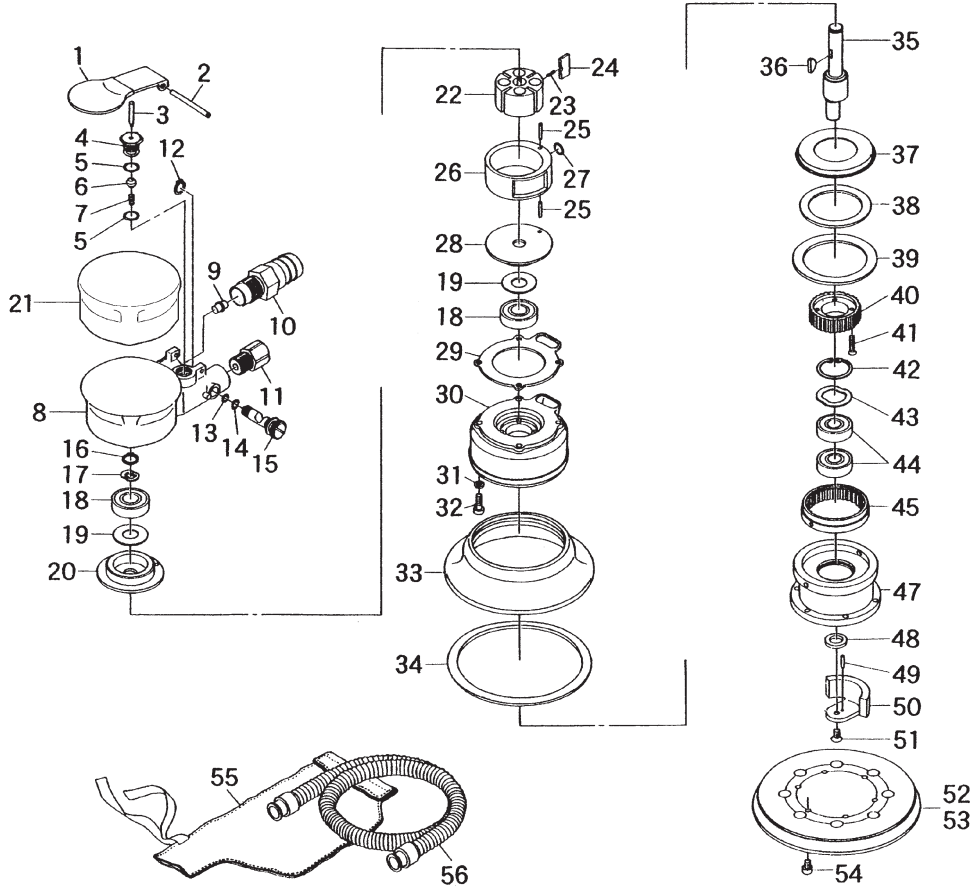


SI-3115R

5" Geared D/A Sander

SI-3115R-6

6" Geared D/A Sander



Ref. No.	Parts No.	Description	Q'ty	Ref. No.	Parts No.	Description	Q'ty
1	1140-15	Throttle Lever	1	29	1040-9	Motor Gasket	1
2	30-40	Roll Pin(3ø-40mm)	1	30	1140-5	Balancer Cover	1
3	455-11	Valve Pin	1	31	1040-19	Washer	4
4	490-4	Valve Body	1	32	Z-632-127	Cap Screw	4
5	S-10	O-Ring	2	33	1041-14U5	Pad Cover	1
6	455-21	Valve	1	34	1041-18U5	Felt Ring	1
7	490-20	Valve Spring	1	35	1140-2	Crank Shaft	1
8	1040-1	Motor Housing	1	36	480-23	Key	1
9	1040-12	Nozzle	1	37	1140-7	Support Ring	1
10	1040-45D	Defuser	1	38	1140-8	Felt Ring A	1
11	180-1SC	Inlet Bushing incl. Screen (680-28A)	1	39	1140-9	Felt Ring B	1
12	JS-8	Retaining Ring	1	40	1140-3	Pinion	1
13	P-4	O-Ring	1	41	Z-M30-120	Cap Screw	4
14	P-5	O-Ring	1	42	JO-26	Retaining Ring	1
15	485-4A	Air Regulator	1	43	WW-180	Wave Washer	1
16	JS-10	Retaining Ring	1	44	6000LLU	Ball Bearing	2
17	WW-100	Wave Washer	1	45	1140-4A	Internal Gear	1
18	6000ZZ	Ball Bearing	2	47	1140-6A	Pad Support	1
19	890-1PB	Seal Plate	2	48	1140-11	Collar	1
20	1040-5A	End Plate	2	49	2000-9-80	Needle Roller	1
21	1040-10A	Housing Cover	1	50	1140-10	Balance Weight	1
22	1140-1	Rotor	1	51	Y-M40-80	Screw	1
23	490-1	Blade Spring	2	★ 52	1140-59M	6" Velcro Pad incl. Plate (1140-57A)	1
24	1040-17	Rotor Blade	4	53	1140-14M	5" Velcro Pad incl. Plate (1140-13)	1
25	25-14	Roll Pin(2.5ø-14mm)	2	54	Z-M40-80	Cap Screw	6
26	1040-2	Cylinder	1	55	485-42	Dust Pack	1
27	P-7	O-Ring	1	56	1040-54	Dust Hose	1
28	1140-12A	Front Plate	1				