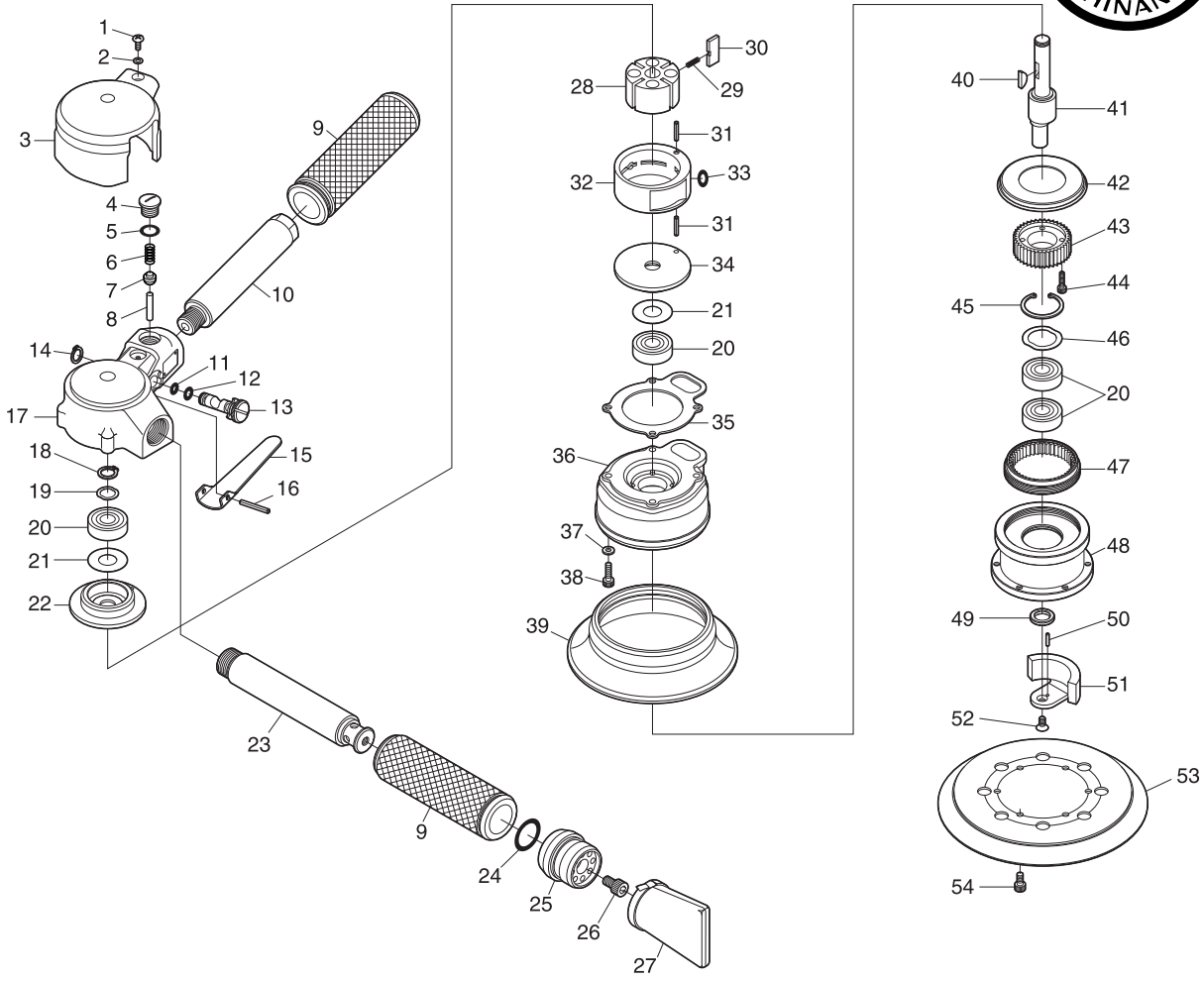


SI-2415

Geared D/A Polisher



Ref. No.	Parts No.	Description	Q'ty	Ref. No.	Parts No.	Description	Q'ty
1	A-M30---80	Screw	1	29	490-1	Blade Spring	2
2	PW-30	Washer	1	30	1040-17	Rotor Blade	4
3	1145-2	Housing Cover	1	31	25-14	Roll Pin(2.5φ-14mm)	2
4	800-14	Valve Screw	1	32	1040-2K	Cylinder	1
5	P-9	O-Ring	1	33	P-7	O-Ring	1
6	670-49	Valve Spring	1	34	1140-12A	Front Plate	1
7	300-10	Valve	1	35	1040-9	Motor Gasket	1
8	670-23	Valve Pin	1	36	1140-5	Balancer Cover	1
9	1145-4	Handle Cover	2	37	1040-19	Washer	4
10	480-15	Handle Grip	1	38	Z-632--127	Cap Screw	4
11	P-4	O-Ring	1	39	1041-14U5	Pad Cover	1
12	P-5	O-Ring	1	40	480-23	Key	1
13	485-4	Air Regulator	1	41	1140-2	Crank Shaft	1
14	JS-8	Retaining Ring	1	42	1140-7	Support Ring	1
15	350-2	Throttle Lever	1	43	1140-3	Pinion	1
16	30-24	Roll Pin(3φ-24mm)	1	44	Z-M30--120	Cap Screw	4
17	1145-1	Motor Housing incl. Bush(670-10)	1	45	JO-26	Retaining Ring	1
18	JS-10	Retaining Ring	1	46	WW-180	Wave Washer	1
19	WW-100	Wave Washer	1	47	1140-4A	Internal Gear	1
20	6000-ZZ	Ball Bearing	4	48	1140-6A	Pad Support	1
21	890-1PB	Seal Plate	2	49	1140-11	Collar	1
22	1040-5A	End Plate	1	50	2000--9-80	Needle Roller	1
23	266-37	Dead Handle	1	51	1140-10	Balance Weight	1
24	P-18	O-Ring	1	52	Y-M40---80	Screw	1
25	256-5	Deflector	1	53	1145-5	138φmm Velcro Pad	1
26	Z-M60--100	Cap Screw	1	54	Z-M40---80	Cap Screw	6
27	256-62	Oil Filter	1				
28	1140-1	Rotor	1				